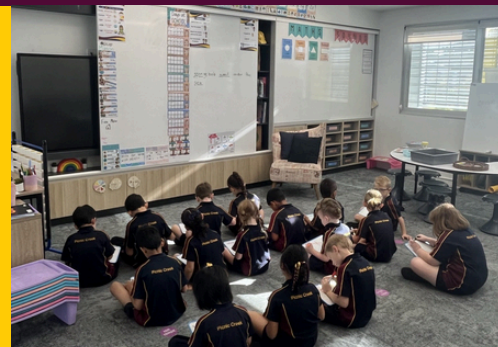


# NEWSLETTER



## Principal's Message

Welcome to Term 2 2025 - The Year of Belonging at Picnic Creek SS.



As we begin Week 3 of Term 2 there are a number of exciting events planned for the coming weeks. Please take some time to read the Dates to Remember section at the end of this update.

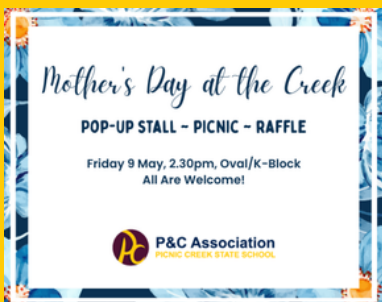
Labour Day just gone is the last of the Public Holidays for the term and as it is a reporting term it is vital that students are in attendance everyday moving forward to ensure they give themselves every opportunity to demonstrate their academic ability.

As the mornings get a little cooler we see some non-uniform pieces (particularly jumpers and leggings) being worn to school. Please review the approved uniform pieces in our Dress Code on school website and work towards ensuring uniform compliance as soon as possible in alignment with our enrolment expectations.

## A MESSAGE FROM THE P&C

P&C Mother's Day Picnic – Friday 9 May

The PC P&C invites all families to our Mother's Day Picnic on Friday 9 May from 2.30pm on the school oval (or K Block - wet weather back up). Bring along your picnic rug and some afternoon tea to enjoy with your child and school mum friends. There'll be games, a pop-up gift stall (\$7 gifts available), raffle prizes, and a whole lot of community spirit. Join us for a relaxed and joyful afternoon as we celebrate the amazing mums, nans, step-mums and special mother figures in our school community! All are welcome!





# Sector Sharing

## By Miss Willcox (Prep-1), Mrs Lennox (Year 2-3) and Mrs O'Sullivan (Year 4-6)



### Reporting Changes

Report Cards will be sent home at the end of Semester One and Two. This year with the introduction of V9 Australian Curriculum, there will be some changes. Prep will now be taught, assessed and reported on for English, Maths and HPE and will 'experience' the other subjects.

Prep-2 will be assessed against a five-point scale and be assigned an Applying, Connecting, Working With, Exploring or Beginning against the Year Level Achievement Standard.

Year 3-6 will be assessed against a five-point scale and be assigned an A,B,C,D or E against the Year Level Achievement Standard.

Students will now only receive a comment for behaviour and overall.

Please ensure you discuss the Report Card with your child and celebrate successes and set goals for improvement. If you have any questions please book an appointment with your child's teacher.



### Staffing Changes

Mrs Nicole Heir our HoPE has commenced her Maternity Leave. We advertised for her replacement and Mrs Rebecca Johnston one of our very own Inclusion teachers was the successful applicant. Mrs Heir has conducted an extensive hand over with Mrs Johnston so all student supports will continue. If you need to contact Mrs Johnston her email is [rjohn354@eq.edu.au](mailto:rjohn354@eq.edu.au) or come into the office to make an appointment.



## TERM 1 DATES TO REMEMBER

- May 8<sup>th</sup> and June 12<sup>th</sup> - P&C General Mtgs
- May 9<sup>th</sup> P&C Mother's Day Picnic 2.45pm
- May 12<sup>th</sup>, 25<sup>th</sup> and June 9<sup>th</sup> and 23<sup>rd</sup> - Whole School Assemblies 2pm Hall
- May 15, 21<sup>st</sup> and 27<sup>th</sup> - Year 5,6 Cluster Sports
- May 22<sup>nd</sup> - Under 8's Day P-2 students 11.30-1pm Parents welcome
- May 30<sup>th</sup> - Active School Travel Breakfast and Fatality Free Friday

